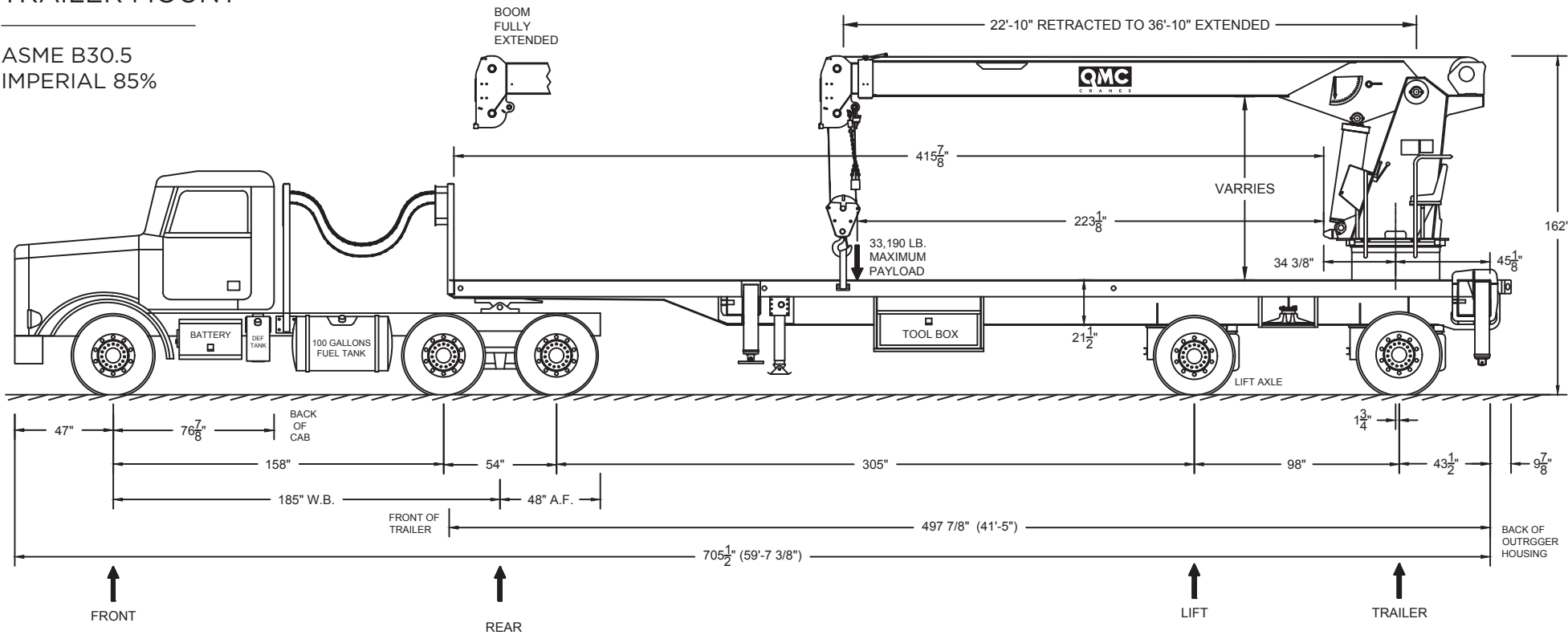


QMC 5037T

TRAILER MOUNT

ASME B30.5
IMPERIAL 85%



BASIS OF DESIGN		
ITEM	DESCRIPTION	REMARKS
Tractor chassis		Per customer
Driver weight	250 pounds	Included in analysis
Fuel tank	100 gallons	Included in analysis
Hydraulic tank	60 gallons	Included in analysis, location may vary
Tool Box	48" Long	Aluminum

WEIGHT DISTRIBUTION					
	FRONT	REAR	LIFT	TRAILER	TOTAL
Tractor	10,080	8,650	0	0	18,730
Crane + Trailer	0	5,320	11,380	11,380	28,080
Payload	0	18,330	7,430	7,430	33,190
Totals	10,080	32,300	18,810	18,810	80,000

Total axle limits shown are based on Federal D.O.T. regulations bridge formula.

Truck dimensions, weights, payload, and lifting performance representative of design baseline. Variations from information shown (truck weights, wheel base, front axle to back of cab, and more) may be accommodated and may result in adjustment of payload, payload size, and crane lifting capacity. Contact QMC Cranes with your requirements.

Load Chart

Red lines indicate transition from structural to tipping limits. Loads above the line are based on structural limits. Loads below the line are based on 85% actual tipping condition per ASME B30.5.

23 FOOT BOOM				
WORKING RADIUS	BOOM ANGLE	RATED LOAD		
		REAR	SIDE	FRONT
8	74	54,400	54,400	54,400
10	65	49,700	49,700	49,700
12	59	43,700	43,700	43,700
15	50	37,200	37,200	37,200
18	38	32,300	32,300	32,300
20	28	28,100	28,100	29,300
22	0	21,700	20,200	21,700

30 FOOT BOOM				
WORKING RADIUS	BOOM ANGLE	RATED LOAD		
		REAR	SIDE	FRONT
10	72	46,700	46,700	46,700
12	68	40,800	40,800	40,800
15	61	34,500	34,500	34,500
18	54	30,200	30,200	30,200
20	49	27,900	25,000	27,900
25	33	17,900	16,100	23,200
29	0	13,600	12,300	16,000

37 FOOT BOOM				
WORKING RADIUS	BOOM ANGLE	RATED LOAD		
		REAR	SIDE	FRONT
12	73	38,900	38,900	38,900
15	68	32,700	32,700	32,700
18	63	28,500	28,500	28,500
20	59	26,000	25,200	26,000
25	49	18,100	16,200	21,400
30	36	13,000	11,700	18,200
35	16	9,900	9,000	15,600
36	0	9,400	8,500	12,700

Working radius is in feet. Loads are in pounds and boom angles are in degrees. Capacity limits will apply based on the load block selected.

WIRE ROPE CAPACITY								
Parts Line	1	2	3	4	5	6	7	8
Load Limit	9,080	18,160	27,240	36,320	45,400	54,480	0	0

Do not exceed parts of line ratings.

1. Tractor must be attached.
2. Load does not include blocks, slings, and all other equipment used to handle objects being lifted.
3. Load ratings are for zero degree list.
4. Loads must be freely suspended.
5. Rope: Rotation resistant, compacted strand, 9080 lb. capacity.
6. This chart is only a guide and should not be used to operate the crane. Individual crane's load chart, operating instructions, and other instructional plates must be read and understood prior to operating crane.